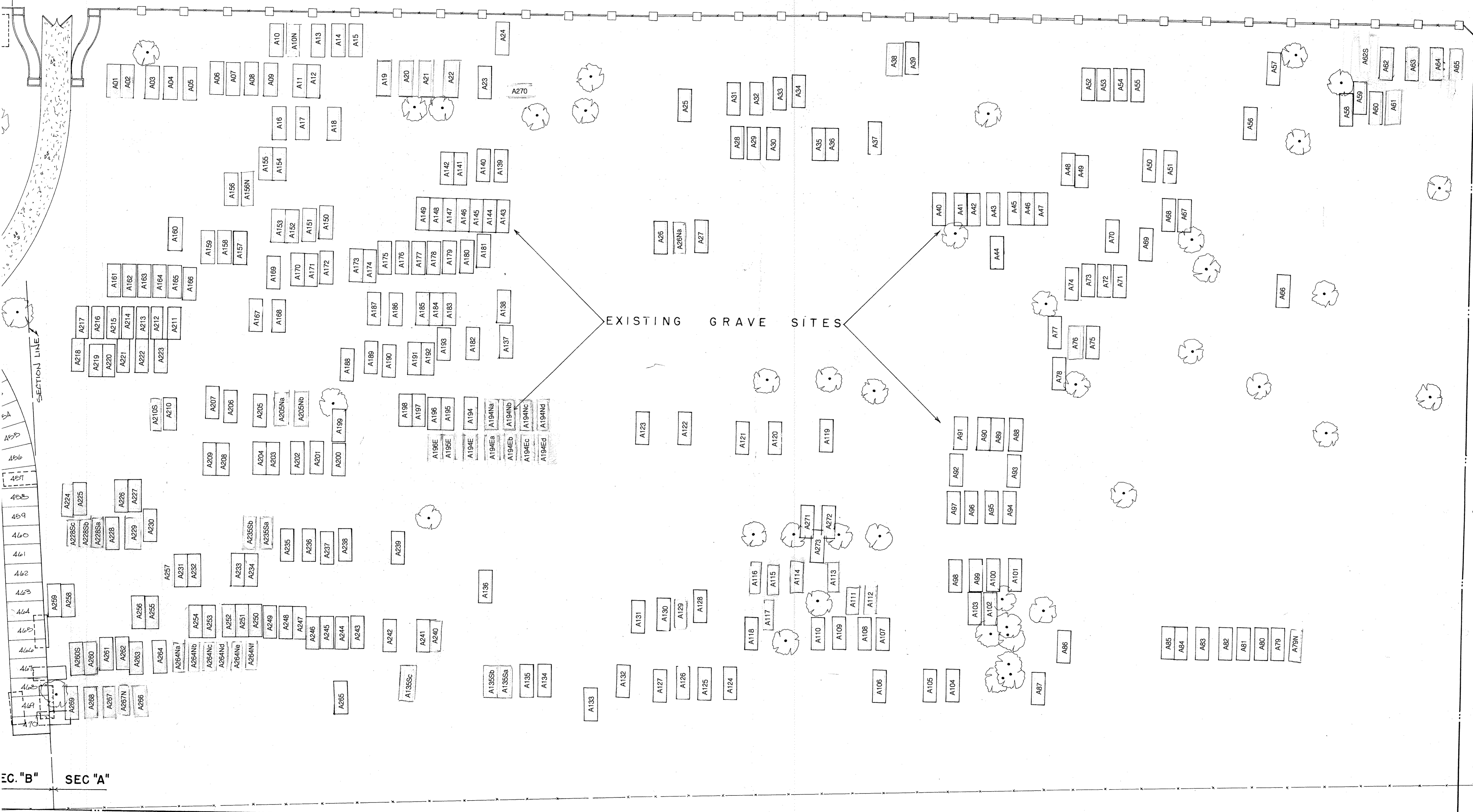
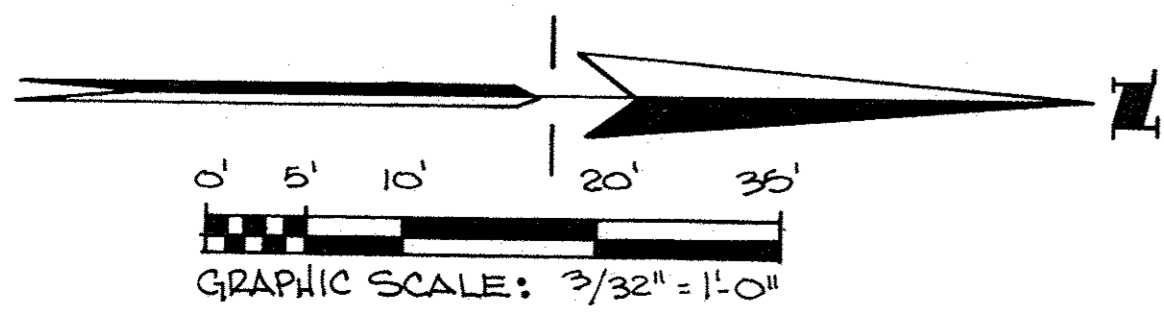


3" SEC. "A"

BETHANY ROAD



SEC. "B" SEC. "A"



BETHANY CEMETERY ASSOCIATION

SECTION "A"

PREPARED BY: RALPH F. HASSA and ASSOC.

3947 COMANCHE ROAD MEMPHIS, TENN.

NOVEMBER 15, 1984 — SCALE: 3/32" = 1'-0"